

Pritchard
Ag LLC

2024-2025

Product Guide

Offering a simple, flexible way of protecting crop yields.



Who is Pritchard Ag LLC?

Pritchard Ag LLC is a privately held agribusiness company whose focus is on meeting the needs of its customers through the environmentally-conscious extraction of natural resources and the distribution of the highest-quality agricultural products.

Pritchard Ag LLC offers a full line of the best liquid crop fertilizers and products on the market. The company works hard to provide the best advice and the safest, most effective solutions available – all with an eye towards preserving our environment.

Increased operational efficiencies and yield production continue to top the list of objectives for growers working to improve their bottom lines. Pritchard Ag LLC offers unique and powerful liquid starters to aid in both those efforts.

Pritchard Ag LLC is a crop fertilizer company based out of Spalding, Nebraska. We are here to help growers attain higher yields by utilizing the best and latest technology and making sure they get the best crop inputs. We want to make sure you get the maximum return from your land, investment, and time. Pritchard Ag believes that great products are only part of your solution – to make those products achieve their maximum potential you have to know the land, the situation, and each grower's individual goals. Pritchard Ag is here to help you every step of the way!



Offering a simple, flexible way of protecting crop yields.

Liquid Starters

6-24-6 (80/20) Green

This beautiful green liquid fertilizer/plant food formulation is perfect for soil-applied application and can also be used as a foliar-applied NPK Application. This is a low salt liquid phosphate fertilizer with an ortho/poly formulation, ideally blended for soil application and delivers.



Size of Product

2.5 Gallon Jugs, 5 Gallon Boxes, Totes and in Bulk

Applications

FOLIAR APPLICATION RATES: Vegetable and Field Crops, Deciduous Fruit and Nut Trees, Grapes, and Citrus: Apply 1 to 3 gallons per acre in a minimum of 5 gallons of water per acre.

SOIL APPLICATION RATES: Vegetables: For sprinkler irrigated fields, spray or dribble directly over the seed at planting. For furrow irrigated fields, inject directly below the seed row 1 to 2 inches deep by using 2 to 4 gallons 6-24-6 per acre. Cotton – Corn – Melons and all other crops, Seed into Moist Soil: Inject 1 inch to 2 inches directly below or to the side of the seed line by using 3 to 8 gallons of 6-24-6 per acre.

Advantages

- Immediate phosphate availability
- Improved early plant development
- Enhanced root stimulation
- In-furrow application
- UAN Compatibility
- Safe and sustainable cold-weather storage
- Capability to integrate multiple micro-nutrients for a single complete application

What Customers are Saying

During times of limited phosphate and potassium availability (cold and wet spring soil conditions present at planting), Pritchard Ag LLC 6-24-6 liquid fertilizer provides a phosphate and potassium source that is positionally and nutritionally available.



NPK 3-18-18 White 100% Ortho

This liquid fertilizer/plant food is a high-quality liquid starter that is 100% Orthophosphate which means it is immediately available to your plant. 3-18-18 is recommended to encourage blossoming, the ripening of fruits and vegetables, or as a winterizer on all crops.

Size of Product

2.5 Gallon Jugs, 5 Gallon Boxes, Totes and in Bulk

Applications

We recommend for Agriculture use of 1 to 2 gallons of concentrate per acre and for Home Landscape and Garden use of 2 to 4 oz. per gallon of water to cover 1,000 square feet.

Advantages

- Low Salt Index which ensures plant safety 100%
- Orthophosphate availability- near-neutral PH
- Fast foliar uptake for immediate plant development
- Ease of foliar application
- Non-corrosive
- White clarity providing the best physical and chemical properties available
- The capability to integrate multiple micro-nutrient packages for a single complete application

What Customers are Saying

We have worked with Pritchard Ag LLC over the past few years and we experienced optimum results when we banded 3-18-18 near the seed at planting or sprayed on the plants at the second true leaf stage.



Liquid Nitrogen and Sulfur

12-0-0-26S Ammonium Thiosulfate

12-0-0-26 is a liquid Ammonium Thiosulfate fertilizer that helps increase crop quality and yields by satisfying a crop's essential need for nitrogen and sulfur. Adding Ammonium Thiosulfate to a UAN solution is an economical and effective way to reduce nitrogen loss, by slowing the rate of nitrification.

Size of Product

2.5 Gallon Jugs, 5 Gallon Boxes, Totes and in Bulk

Applications

Most crops need between 20 to 50 pounds of sulfur (8 to 18 gallons of 12-0-0-26) per acre per year depending upon local growing conditions, soil type, fertilizer placement, crop and yield potential. Starter Fertilizer: Row and Vegetable Crops (starter fertilizer) Apply 12-0-0-26 as a band application 2 inches to the side and 2 inches below the seed row at 1 to 3 gallons per acre by itself or in combination with other fertilizers. Row and Vegetable Crops (sidedress) Inject 6 to 12 gallons of 12-0-0-26 per acre to meet the crop's sulfur requirement. If injection applications are made close to the row (less than 12 inches), reduce the application rate by half (3 to 5 gallons per acre). For recommendations regarding crops not listed contact your Pritchard Ag LLC representative.

Advantages

- May be applied through many types of irrigation systems
- Stabilizes and maximizes the nitrogen use efficiency (NUE) of UAN
- Delivers all nitrogen in the ammoniacal form and sulfur in both elemental and sulfate forms
- Increases nitrogen efficiency when added to a side-dress program
- Is easy to mix and handle

What Customers are Saying

12-0-0-26S Ammonium Thiosulfate has nourished our crops with Potassium and Sulfur during the period of rapid growth and seed development



0-0-25-17S Potassium Thiosulfate

KTS 0-0-25-17S Potassium Thiosulfate is neutral to a basic, clear liquid solution containing 25% potash and 17% sulfur. Each gallon of the product contains 3 pounds of potash and 2.1 pounds of sulfur. This product can be applied by drip, sprinkler, or flood irrigation. It may be blended with other fertilizers or applied as a foliar treatment on selected crops. This product is compatible with urea and ammonium polyphosphate solutions in any ratio.

Size of Product

2.5 Gallon Jugs, 5 Gallon Boxes, Totes and in Bulk

Applications

Application of 0-0-25-17 should be made based on soil, soil release rate test, and/or plant tissue analysis for potassium. Starter Fertilizer: Apply 1 to 4 gallons of 0-0-25-17 per acre by itself or with other starter fertilizers in a 2" X 2" or a 2" X 0" placement (2 inches to the side of the seed. Foliar Fertilizer Application: Small Grains – Apply 2 to 4 quarts per acre at tillering to early boot stage. Alfalfa – Apply 4 to 6 quarts at crown green-up or on regrowth after cutting. Soybeans – 4 to 6 quarts per acre at R1 to R2 stage. For recommendations regarding crops not listed contact your Pritchard Ag LLC representative.

Advantages

- Is a neutral to a slightly basic solution with excellent cold weather stability
- Can be applied through all types of irrigation systems and will not plug drip lines
- Lowers blending time and cost
- Is easy to handle
- Fortifies liquid starter formulations and is compatible with ammonium polyphosphate (10-34-0 and 11-37-0) & UAN 28 and UAN 32

What Customers are Saying

KTS 0-0-25-17S has nourished our crops with Potassium and Sulfur during the period of rapid growth and seed development.



Foliar Nitrogen

XRN 20-0-7-.5

Give your crops a boost in the POST season. Blend this chloride free safe source of Nitrogen, Potassium and Sulfur with Micro Pak and Brix Builder and put in a new top on your yields.

Size of Product

2.5 Gallon Jugs, 5 Gallon Boxes, Totes and in Bulk

Applications

Application Rates 1to 2 gallon per acre

Advantages

- Safe efficient source of nitrogen potassium and sulfur
- Perfect companion with glyphosate and Liberty
- Improves late season plant health
- High quality slow release nitrogen
- Low salt index



Liquid Specialty Products

Micro Pak

Liquid Micro Pak Micronutrient Concentrate supplement is a cheated combination of four elements: Boron (0.05%), Copper (0.50%), Manganese (2.00%), and Zinc (2.00%). This is essential to plant nutrition for the prevention and treatment of micronutrient deficiency. Micronutrients are necessary for normal plant growth and reproduction. When sufficient amounts of the micronutrients are not available to plants and turf, both root and top growth are affected; chlorophyll formation is reduced, a general retardation of growth occurs, and even the function of the nitrogen-fixing bacteria is interrupted.



Size of Product

2.5 Gallon Jugs, 5 Gallon Boxes, Totes and in Bulk

Applications

We recommend for Field Crops to apply 1-quart to 1-gallon concentrate with 15 to 20 gallons of water per acre and on Lawns, Football Fields, and Parks apply 10 ounces of concentrate with 5 gallons of water per 1,000 square feet.

Advantages

- Immediate leaf and root absorption
- More beautiful, luxuriant greening
- Healthy, vigorous root and top growth
- Compatible with various NPK products

What Customers are Saying

Pritchard Ag LLC's Micronutrients product is reasonably priced and they provide our crops the necessary Micronutrients for normal plant growth and reproduction.



Liquid Specialty Products

HumiK LX

HumiK LX acid is a natural soil conditioner that acts as an organic chelator and microbial stimulator. It has a unique carbon matrix which includes a high concentration of trace minerals and organic acids. HumiK LX acid enhances the plant's ability to take in essential nutrients and improves soil structure.



Size of Product

2.5 Gallon Jugs, 5 Gallon Boxes, Totes and in Bulk

Applications

We recommend 1 to 4 gallons per acre.

Advantages

- Increases soil carbon
- Improves plant health
- Improves germination and viability of seeds
- Increases cation exchange capacity (CEC)
- Improves soil structure for better aeration and water movement
- Especially effective on sandy soils
- Chelates macro and micronutrients to increase availability to the plant for a longer period of time
- OMRI Certified



What Professionals are Saying

Humics: Putting science on your side to improve soils and maximize yields according to Mir Seyedbagheri, a professor at the University of Idaho and former co-chair of the International Humic Society.



Brix Builder

Brix Builder is a specially formulated, cold-processed sweetener that has been designed to deliver a health-boosting shot of energy that will invigorate your plants. Available as a powder to include within your own liquid program, Brix Builder increases the plant's BRIX level (the amount of proteins, vitamins, minerals, and sugar within the plant) and enables it to grow more efficiently. This leads to a stronger and healthier plant. In addition to these benefits, Brix Builder has also proven to increase the efficacy of your herbicide program by making the weeds take in the chemicals at a higher rate.

Size of Product

2.5 Gallon Jugs, 5 Gallon Boxes, Totes and in Bulk

Applications

We recommend applying 1 to 4 quarts per acre of Brix Builder at the V3-V5 growth stages for soybeans, V3-V7 on corn, and at boot and flag leaf on wheat.

Advantages

- Increases proteins, vitamins, minerals, and sugar within the plant
- Increases yield potential by improving plant health
- Has shown to consistently reduce insect pressure
- Contributes to overall plant health and vitality
- Environmentally friendly
- Low per acre cost
- Compatible with other treatments and surfactants



Product Description

PuriFECate is a specialty water conditioner designed to prevent hard water scale build-up in pivot and drip irrigation systems.

Common hard water scale formation is commonly the result of calcium carbonate precipitation and accumulation in equipment employing hard water.

PuriFECate will bind with calcium, magnesium and iron, preventing the formation of common hard water scale.

PuriFECate can also be used to treat water prior to diluting fertilizers, herbicides, and pesticides; promoting maximum glyphosate efficacy and minimizing insoluble solids that can form when minerals precipitate with phosphates. (Precipitated solids can inhibit uniform application rates and/or plug sprayer nozzles.)

Appearance

- Transparent to Light Yellow Liquid
- Mild Odor

Technical Specifications

- Specific Gravity 1.4
- pH (1% solution) 5 - 6
- Salt out point, -11° F

Application Rates

For most applications, a rate of 8 oz. per 100 gallons of water is sufficient. Use the graph to determine precise application rates.

Calcium (ppm)	OZ. /100 gallons
100	1
200	2
300	4
400	5
500	7
600	8
700	10
800	11
900	13
1,000	15
1,100	16
1,200	18

Packaging

- 5-gallon non-returnable plastic pails
- 55-gallon non-returnable drums

Storage Stability

- 36 months in sealed containers

Product Data Sheet PuriFECate - Important Notice Regarding the Attached Information:

The statements, technical information and recommendations contained in the accompanying document(s) are based on tests and data that are believed to be reliable. Further, as the actual use of our products by others is beyond our control, no guarantee of any kind is made as to the effects of such use, or the results to be obtained, whether the use is made in accordance with the recommendations or suggestions contained herein or otherwise. The accompanying document(s) is not contractual and NOTHING HEREIN CONSTITUTES A REPRESENTATION OR WARRANTY THAT THE GOODS

DESCRIBED ARE FIT FOR A PARTICULAR PURPOSE OF A CUSTOMER or that their use does not conflict with any existing patent rights. The exclusive source of any warranty and of any other customer rights whatsoever is on the invoice. Also, since the accompanying data sheet(s) may be provided by elec-tronic media, we cannot guarantee the accuracy or originality hereof. Any alterations made to the accompanying document(s) other than by corporate head-quarters is expressly prohibited.

Liquid Micronutrients

Copper (Cu) 7.5% EDTA Chelated

Copper (Cu) activates enzymes and catalyzes reactions in several plant growth processes and it helps ensure successful protein synthesis.

Iron (Fe) 4.5% EDTA Chelated

Iron (Fe) is essential for crop growth and food production.

Magnesium (Mg) 2.5% EDTA Chelated

Magnesium (Mg) is required for property plant growth and acts as a phosphorus carrier in plants. So, magnesium is essential for phosphate metabolism, plant respiration, and the activation of several enzyme systems.

Manganese (Mn) 6.0% EDTA Chelated

Manganese (Mn) functions primarily as part of enzyme systems in plants. Manganese accelerates germination and maturity while increasing the availability of phosphorus (p) and calcium (Ca).

Boron (B) 10% EDTA Chelated

Boron (B) is essential for cell wall formation and rapid growing points within the plant, such as reproductive structures. It participates in the regulation of starch production and translocation of sugars and starches.

Zinc (Zn) 9.0% EDTA Chelated

Zinc (Zn) is one of the first micronutrients recognized as essential for plants and the one most commonly limiting yields. Although Zinc is required in small amounts, high yields are impossible without it.



ALL-IN-ONE ADJUVANT WITH JUST THE RIGHT AMOUNT OF EVERYTHING. THAT'S FULLTEC!



Description



Fulltec Adjuvant is the most complete adjuvant on the market. It brings the convenience of an efficient multi-functional product with the practicality of a user-friendly rate and package for "busy-ness" operations and over-loaded farmers.

Main Benefits:



Time-saver

Just one product can replace the usage of many others, saving time and making operations more efficient.



User-friendly

Easy to handle packaging with a low-use rate makes Fulltec the most convenient adjuvant on the market.



Pesticide Efficiency

Fulltec Adjuvant reduces losses in the spray application and improves droplet coverage and plant absorption.

- Drift retardant
- Surfactant
- Water Conditioner
- pH Adjuster
- Emulsifier
- Defoamer
- Stabilizer
- Deposition Aid
- And more

Directions

Rate:

15-18 - oz/100 gal for general use.

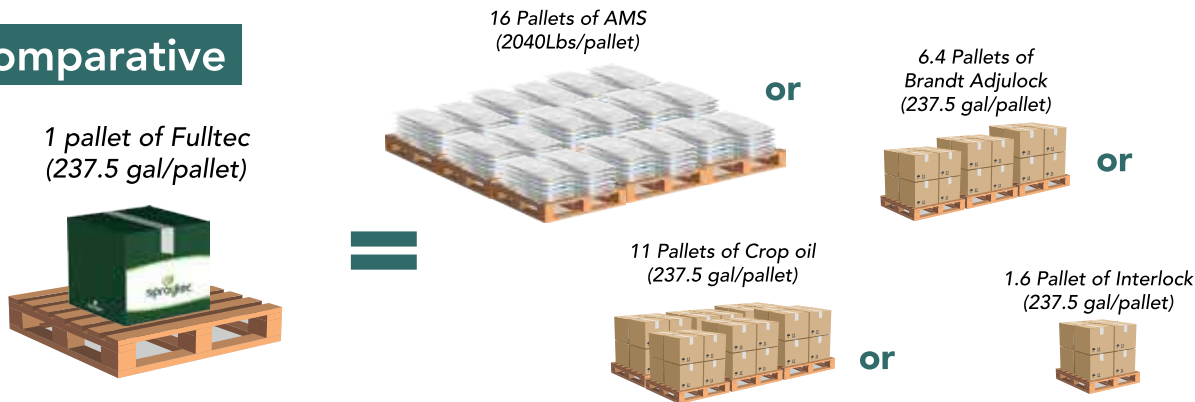
2.7 oz/acre with PPO herbicides.

Labeled For:

Dicamba based products
Engenia® and XtendiMax® Herbicides

2,4-D choline based products
Enlist One® and Enlist Duo® with Colex-D® technology

Comparative



Spraytec Fertilizers
(515) 252 7777
Urbandale, Iowa, US.
Spraytec.com

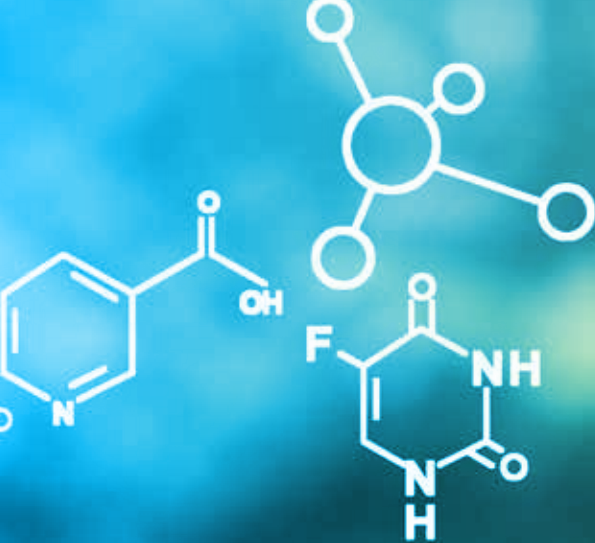
Talk to your local retailer/sales representative today, for more information.

IMPORTANT: Always read and follow label instructions when using this product.

Spraytec, Fulltec, and Fulltec Adjuvant are trademarks of Spraytec Fertilizers, LLC. All photos are either the property of Spraytec or are used with permission. All other trademarks are the property of their respective owners.

This product is for sale only in the registered states. Please ask Spraytec for a specific list of states where sale or distribution of this product is permitted.

100% biodegradable product.



**SIMPLE.
SUBSTANTIATED.
SUSTAINABLE.
SCIENCE.**



NanoMaxTM Seed

Nanoliquid[®] technology ingredient for seed treatments

Why Use NanoMax Seed:

NanoMax Seed is formulated for professional seed treatment operations to maximize loading and uptake of seed coating technologies. NanoMax seed is highly compatible and enhances plant uptake of both crop protection and nutrient seed coating products.

What is in NanoMax Seed:

The NanoMax Seed principle functioning agent is an approved inert ingredient for use on food and non-food crops. Our nanoparticles are derived from naturally occurring minerals. All other ingredients are approved inert ingredients for use with EPA products.

Use Rate:

Add 0.5 fl oz of NanoMax Seed per 100 lb of seed. Ask your Nano-Yield sales representative for customized application guidelines or custom formulas.

FAQ Topics:

Coloring

- NanoMax Seed is purple
- NanoMax Seed will not affect product color with the exception of lightening due to dilution

Foaming

- NanoMax Seed should not produce or increase foaming in production

Order of mixing

- Generally, NanoMax Seed should be added after all treatment components are blended.
- NanoMax Seed can be blended directly with technical ingredients prior to blending. The advantage of mixing NanoMax Seed with ingredients or technical materials separately would be loading nanoparticles exclusively with that ingredient.



Let's partner today.

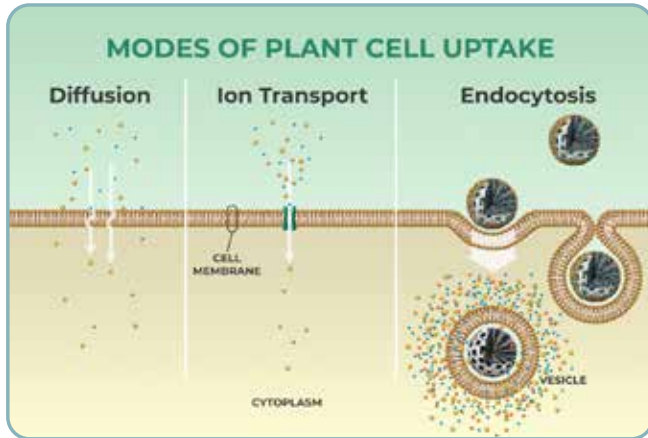
WWW.NANO-YIELD.COM/NLT

© 2024 Aqua Yield Operations, Inc. v24a

HOW IT WORKS

What is a nanoparticle?

A nanoparticle is usually defined as a particle that is between 1 and 100 nanometers in diameter. Nano-Yield™ nanoliquid® particles are between **10 and 100 nanometers**.

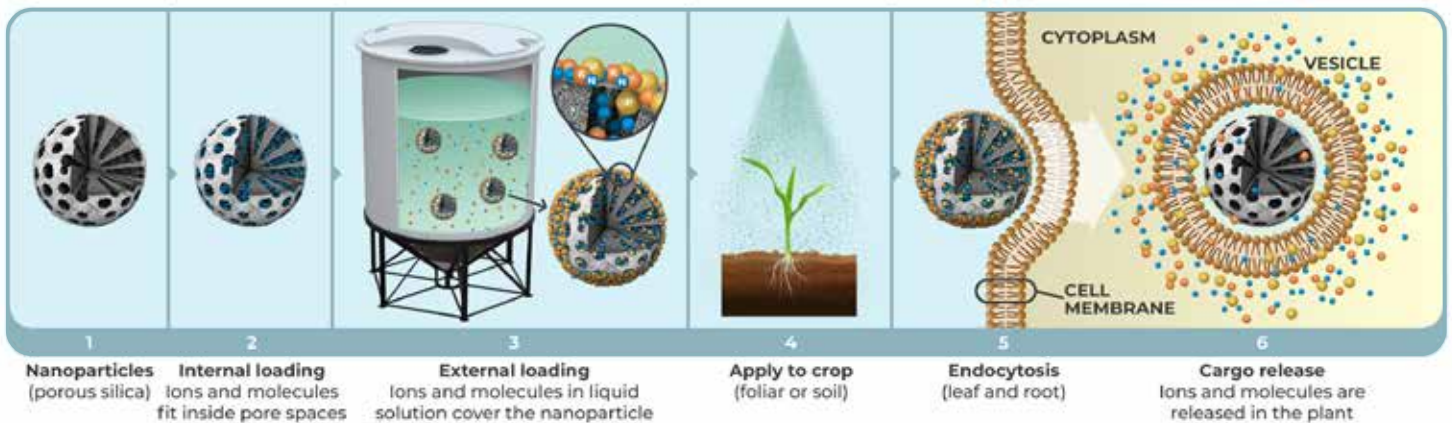


Why are nanoliquid particles special?

Each Nano-Yield nanoparticle carries thousands of fertilizer ions or active ingredient molecules rapidly into the plant cell by a plant mechanism called endocytosis. While conventional products are only absorbed through diffusion and active transport, **only nanoparticles are taken up via endocytosis.**

Loading and unloading nanoparticles

Nano-Yield nanoparticles are designed to be loaded with any common fertilizer ion or active ingredient. The particles carry these materials into the plant and release them once inside.



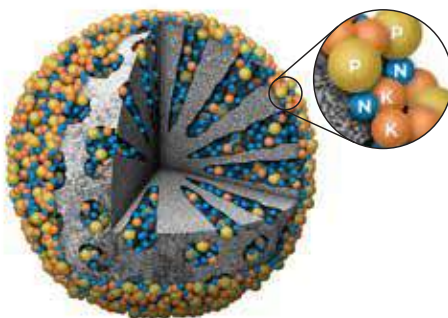
Improves foliar and soil applications

When soil applied, Nano-Yield nanoparticles stay in solution or loosely cling to soil colloids making them able to deliver more nutrients to the plant. When applied by foliar application, Nano-Yield nanoparticles adhere to plant surfaces enhancing penetration through the cuticle. Both foliar and root applications will benefit from endocytosis.

Our patented technology

Nano-Yield offers multiple patented technologies for carrying unique crop inputs more efficiently into plant cells. Once loaded, these technologies are ready to deliver nutrients and crop protection to the plant via endocytosis. Below are representations of Nano-Yield technologies optimized for either pesticide or nutrient products.

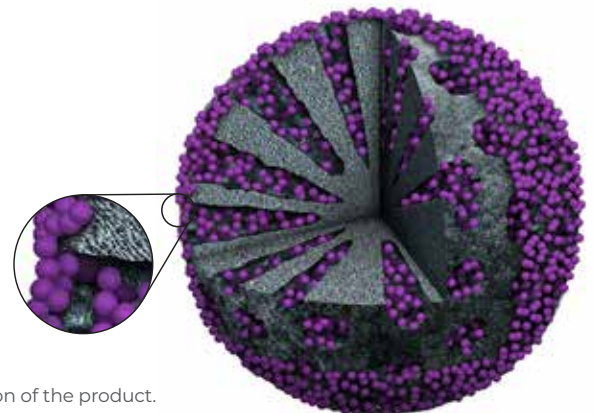
Nutrient Particle



Nutrient ions of the **fertilizer solution** are attracted to the nanoparticle and form an outer layer covering interior and exterior surfaces of the particle.

Active Ingredient molecules are attracted to the nanoparticle and form an outer layer covering interior and exterior surfaces of the particle.

Pesticide Particle

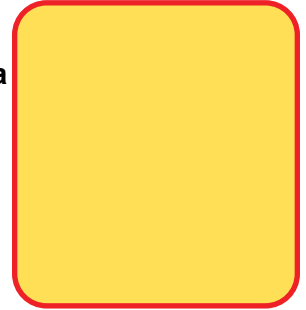


*The images shown are for illustration purposes only and may not be an exact representation of the product.

Liquid Specialty Products

Fulvic Acid

Fulvic Acid is ideal for use on all soils and plants under all conditions. Fulvic acid is a small compound that can easily enter the cells of plants. It acts as a natural chelating agent binding to nutrients to create Fulvic acid-rich complexes. These complexes are then readily absorbed by the plants' leaves effectively increasing the plants' uptake of nutrients. It also helps plants absorb needed nutrients that are otherwise inaccessible. In combination with fertilization, it allows you to get the most out of your fertilization program and may even reduce the amount of nutrients applied.



Size of Product

2.5 Gallon Jugs, 5 Gallon Boxes, Totes and in Bulk

Applications

We recommend on Agronomic Crops that you use 1 to 4 quarts of this product to 25 gallons of water per acre.

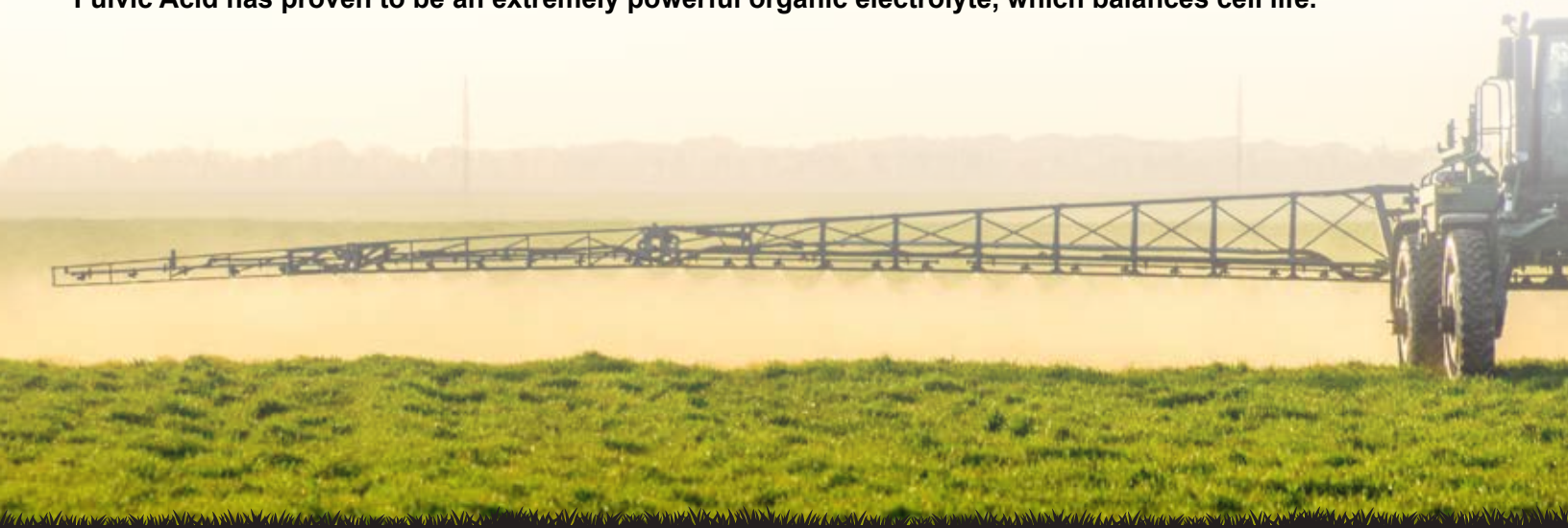
Advantages

- Boosts cation exchange capacity
- Enhances cell division and cell elongation
- Aids Chlorophyll synthesis
- Enhances permeability of cell members
- Increases drought tolerance and prevents wilting
- Restores electrochemical balance
- Increases enzyme activity
- Detoxifies various pollutants
- OMRI Certified



What Professionals are Saying

Fulvic Acid has proven to be an extremely powerful organic electrolyte, which balances cell life.



Nanon+[®]



Nanoliquid[®] technology for enhancing nutrient uptake

1-0-0

Nanon+[®] is designed to protect and carry nutrients in liquid solution to improve efficiency and reduce waste. Nanon+ enhances plant nutrient uptake and availability for liquid nutrient formulations including macronutrient and micronutrient products.

Nanoliquid technology is a patented and environmentally sustainable crop solution for improving plant uptake of agricultural inputs.

Nanon+ benefits:

- Improves nitrogen efficiency
- Enhances nutrient uptake
- Unique carrier technology
- Highly compatible with most liquid fertilizers
- Clean, easy handling and safe for the environment

Mixing guidelines:

Add the liquid fertilizer to the tank then add **4 oz/ac Nanon+**.

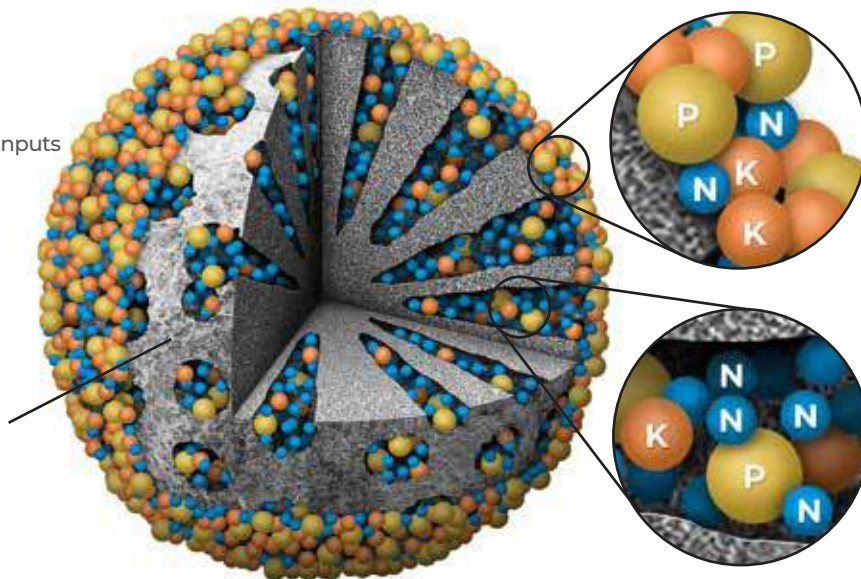


THE ANATOMY OF A Nanon+ Particle

Nanoliquid benefits:

- Improves plant uptake
- Highly compatible with ag inputs
- Clean, easy handling
- Safe for the environment
- Proven performance

A **nanoparticle** is between 10-100 nanometers (nm) in size, providing room for thousands of nutrient ions.



Nutrient ions of the **fertilizer solution** are attracted to the nanoparticle and form an outer layer of ions.

Nanon+ contains nanoparticles loaded with **nitrogen ions**.



For the latest trials, product information, and testimonials, visit

www.nano-yield.com/nanon

© 2024 Aqua-Yield Operations, LLC



NanoPro[®]

The nanoliquid[®] carrier adjuvant for crop protection



NanoPro[®] is a carrier adjuvant designed to improve pesticide efficacy by supporting plant uptake. **NanoPro** is most effective when combined with systemic and translaminar chemistries including herbicides, insecticides, fungicides, and plant growth regulator (PGR) products.

Nanoliquid technology is a patented and environmentally sustainable crop solution for improving plant uptake of agricultural inputs.

NanoPro benefits:

- Improves active ingredient absorption up to 20%*
- Supports reduced application frequency
- Unique carrier technology
- Highly compatible with most products
- Clean, easy handling and safe for the environment

* Actual % will vary between product formulations and field conditions

Mixing guidelines:

Add the liquid fertilizer to the tank then add **4 oz/ac NanoPro**.

1 Add water and water conditioners



+

2 Add crop input



3 Add nanoliquid product



+

4 Add surfactant (if needed)



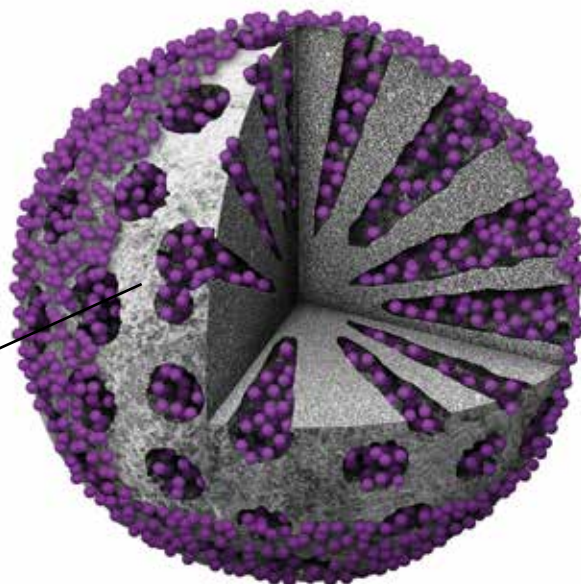
+

THE ANATOMY OF A NanoPro Particle

Nanoliquid benefits:

- Improves plant uptake
- Highly compatible with ag inputs
- Clean, easy handling
- Safe for the environment
- Proven performance

A **nanoparticle** is between 10-100 nanometers (nm) in size, providing room for thousands of nutrient ions.



Ions of the **crop protection** solution are attracted to nanoparticles, filling the empty space and also forming an outer layer of ions around the nanoparticle. Loaded particles are now ready for effective delivery.

Proven to improve control of:

- Grassy Weeds
- Broadleaf Weeds
- Sedges
- Fungal Diseases
- Insect Pests



For the latest trials, product information, and testimonials, visit

www.nano-yield.com/nanopro

© 2024 Aqua-Yield Operations, LLC





Using NanoCote™ Core

Benefits: Use NanoCote Core to increase plant nutrient uptake, protect nutrients from environmental losses, and reduce dust and buildup on equipment.



Rate

Apply NanoCote Core at 108 fl oz per ton for most fertilizer products. Contact your NanoCote sales representative for custom guidelines.



Application

NanoCote Core can be applied directly or sprayed on. NanoCote disperses quickly and evenly when blended. NanoCote is compatible with most spray applicators with the exception of very fine sprays and misting.

If there will be minimal blending following application, it is desirable to achieve an even spray coating for each particle.



- Minimum mixing time: 5 minutes
- Dry time: Approximately 5 minutes

FAQ

- **Does NanoCote Core need to be agitated prior to application?**
It is not necessary, but agitation is recommended before application.
- **NanoCote Core work with any fertilizer?**
Yes, NanoCote Core is compatible with most common dry fertilizers. Use caution with very fine particle sizes.
- **Will NanoCote Core reduce dust?**
Yes, NanoCote Core is highly effective at reducing dust.
- **Will NanoCote Core reduce nitrogen loss?**
Yes, NanoCote Core reduced nitrogen losses using the unique properties of nanoparticles and increased plant uptake.
- **Can I apply NanoCote with other coatings?**
Yes, NanoCote Core is highly compatible with most coatings. However, always perform a compatibility test before combining with other coatings or applying NanoCote Core with equipment used to apply other coatings such as products containing NBPT.
- **Is NanoCote Core a plastic coating?**
No, NanoCote core is a co-polymer that is highly biodegradable and environmentally friendly.

Common Compatible Formulations:

- ✓ Urea 46-0-0
- ✓ DAP 18-46-0
- ✓ MAP 11-52-0
- ✓ AMS 21-0-0-21S
- ✓ KN 13.5-0-44
- ✓ SOP 0-0-50
- ✓ MOP 0-0-60
- ✓ KMag 0-0-21-10 Mg-21S
- ✓ CAN 17 17-0-0-8.8Ca

Liquid Specialty Products

Quick Stand ST

Quick Stand ST activates the plant defense process and increases plant rooting with healthy and more vigorous plants.

Size of Product

Jug: 2.5 gallons (21.75 lbs / 9.87 kg)

Applications

May be used on soybeans, corn, wheat, and other grain crops.
We recommend that you apply 5.5 oz per 100 lbs. of seed, directly onto the seed.



Advantages

- Stimulates initial growth
- Quick stand ST increases the production of Protein in most plants
- Increases Photosynthesis
- Increase Chlorophyll
- Increase plant growth rate

CAUTION: KEEP OUT OF REACH OF CHILDREN

This product is harmful if swallowed. Avoid contact with eyes, open cuts, or sores.

Storage and Disposal

Store in a cool, dry place out of direct sunlight.

What Professionals are Saying

Economical way to protect yield.

“I’ve been looking for a way to put Calcium on my seed.”



Spirit

Spirit is an all-natural liquid biostimulant for soil organisms and plants that contains certain biological activators, which are by-products of a proprietary fermentation process. These active agents include vitamins, enzymes, and other powerful but gentle growth stimulators such as Brassinosteroids, B-Vitamins, Tracontonal, and others.

Size of Product

2.5 Gallon Jugs, 5 Gallon Boxes and Totes

Applications

13 oz per acre in furrow and or Foliar.

Advantages

- Increases crop yields and profits
- Improves crop quality
- Reduces Nitrogen inputs and improves its utilization
- Hasten germination and maturity
- Improves soil structure and infiltration
- OMRI Certified



What Professionals are Saying

Spirit wins every time.



Liquid Specialty Products

Sea Kelp 0-0-15

Sea Kelp is designed to be used as part of a well balanced plant nutrient program. Our animal free, plant derived Icelandic Kelp stands out as being of the highest quality sourced from ethically harvested locations. This product can be used for all agronomic and horticultural applications.

Size of Product

2.5 Gallon Jugs, 2.5 Gallon Boxes, Totes and in Bulk

Applications

Sea Kelp can be applied at a rate between 12.8 - 48 fluid oz. per acre and can be applied in-furrow at planting or as a foliar at any time during the growing season.

Advantages

- Rich in beneficial trace minerals and hormones that stimulate plant growth
- High in carbohydrates which are essential building blocks in growing plants
- Low in cellulose so it breaks down readily



What Customers are Saying

I make sure Sea Kelp is in the tank every time, as it increases my profitability.

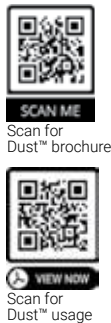




This cleaner and safer replacement to talc and graphite has farmers talking! Switch now to the seed lubricant made entirely from U.S. soybeans. It's renewable, and "Made in America" and can be used for

replacing talc and graphite in your seed meter systems. DUST is a premium seed and meter lubricant. You have the option to order 14lb pail or 1lb re-releable bags. Order now!

Every planter box needs a seed lubricant, but not all products are the same. Come see how Dust is changing the way we have traditionally looked at seed lubrication.



Low Mu Tech™ Corn Trial

Figure 4. Average Vigor Rating For Each Treatment Recorded 5/18.

	Vigor 5/18
Graphite	4.5
Low Mu Tech	6.0
UTC	5.0

Low Mu Tech™ Soybean Trial

Figure 4. Average Vigor Rating For Each Treatment Recorded Over Time.

	Vigor 5/30	Vigor 5/30	Vigor 6/14
Graphite	8.3	6.0	7.8
Low Mu Tech	9.0	6.8	7.8
No Lubricant	8.3	6.0	7.3

Trial conducted by Greenley Research Center at the University of Missouri August 2018.

DRY SEED FINISHERS



SlipSHINE★ 6300

- ✓ Superior slip
 - ✓ Dazzling shine AND sheen
 - Soy, Wheat 1 – 2 dry oz / cwt
 - Corn, cotton 2 – 4 dry oz / cwt
- 25lb bag in box / 750 lb bulk bag

Regulatory: US EPA Inert suitable for food-use pesticide formulations.



SlipSHINE★ Moly 1600

- For soy planted in low pH soils.
- ✓ Superior slip
 - ✓ Dazzling shine AND sheen
 - ✓ Delivers molybdenum
- Soy 1.6 dry oz / cwt
- 25lb bag in box / 750 lb bulk bag
- Regulatory: AAPFCO.

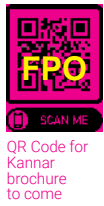


SlipSHINE★ PLUS 2050

- ✓ Superior slip
 - ✓ Dazzling shine AND sheen
 - ✓ Seed applied soil amendment
- Contains Kannar MiKrobe™ 43J consisting of:

Bacillus amyloliquefaciens
Bacillus methylotrophicus

- Corn 1.6 dry oz / unit
4.0 bu / acre, 70% consistent (418 reps over five years, 109 locations)
 - Soy 0.8 dry oz / unit
+1.2 bu / acre, 71% consistent (206 reps over four years, 59 locations)
- 25lb bag in box / 750 lb bulk bag
- Regulatory: AAPFCO.



SpeedFLOW™ is a unique technology that delivers drier and the most flowable seed.



corn



corn with SlipShine™



soybeans



soybeans with SlipShine™

Dry Starters

Monoammonium Phosphate 11-52-0

Monoammonium Phosphate 11-52-0 ('MAP') is a commercial fertilizer used as a plant food in agricultural crop production. MAP is an excellent wide range, agronomic choice for all crops requiring nitrogen and phosphorus nutrition.



Size of Product

Totes and in Bulk

Applications

For specific application rates follow the recommendation of a qualified individual or institution, such as but not limited to, a certified crop advisor, agronomist, university crop extension publication, or apply according to recommendations in your approved nutrients management plan.

Advantages

- 100% water soluble
- Well adapted to a wide range of application methods
- Suitable as a starter fertilizer
- Excellent product for use in custom-mixed dry blends
- Has uniform pellet size, free-flowing, blends well, spreads evenly, dust-free, resists crusting and bridging in storage bins

What Customers are Saying

Pritchard Ag LLC's 11-52-0 is an excellent wide range choice for all crops requiring nitrogen and phosphorus nutrition.



21-0-0+24S Ammonium Sulfate

Simplot's Ammonium Sulfate Fertilizer, 21-0-0+24S is a popular early spring fertilizer for leafy vegetable crops, grapes, fruit trees, and lawns. Ammonium Sulfate is an inexpensive, readily available form of water-soluble nitrogen. When used in early spring, it encourages rapid leafing out of the trees and shrubs and quick greening of lawns. When used on leafy vegetable crops like lettuce and cabbage, it causes a rapid development of these vegetables and promotes quicker harvests. The high percentage of sulfur in this fertilizer makes it especially desirable for acid-loving plants.



Size of Product

Totes and in Bulk

Applications

This product is a commercial fertilizer used as a plant food in agricultural crop production. For specific application rates follow the recommendations of qualified individuals or institutions, such as but not limited to, a certified crop advisor, agronomist, university crop extension publication, or apply according to recommendations in your approved nutrient management plan. Ground cover: Broadcast at 5lbs. per 1,000 sq ft. Application at the recommended rate will last approximately 4 to 6 weeks.

Advantages

- Ammonium Sulfate is a two-in-one fertilizer
- Its crystal form and 21-0-0 analysis are one of agriculture's oldest solid forms of fertilizer
- Inexpensive, readily available for a water-soluble nitrogen
- It encourages rapid leafing and greening qualities

What Customers are Saying

Pritchard Ag LLC's 21-0-0+24S is an economical soluble form of quick greening nitrogen with sulfur.



Dry Nitrogen

Urea 46-0-0

UREA 46-0-0 is a commercial fertilizer used as a plant food in agricultural crop production. Urea 46-0-0 is 100% water-soluble and is mobile in the soil, moving with soil moisture until soil organisms initiate the nitrification process that changes the organic nitrogen to ammoniacal nitrogen and eventually to nitrate nitrogen. Urea 46-0-0 will supply a continuous, long-lasting supply of nitrogen to the growing crop.



Size of Product

Totes and in Bulk

Applications

CROPS: We would recommend 96 lbs. of 46-0-0 to be applied per acre. Application at the recommended rates will last approximately 6 to 8 weeks. For specific application rates follow the recommendation of a qualified individual or institution, such as but not limited to, a certified crop advisor, agronomist, university crop extension publication, or apply according to recommendations in your approved nutrient management plan.

Advantages

- 100% water soluble
- A continuous, long-lasting supply of nitrogen to the growing crop
- Mobile in the soil
- Can be applied through irrigation water by flood, furrow or sprinkler method
- Suitable for ground or aerial application

What Customers are Saying

Pritchard Ag LLC's 46-0-0 is an economical nitrogen source that can be applied almost any time of the year with great results.



MicroSync Pro

MicroSync Pro is intended for use in mixing or blending with other fertilizer materials. This product is recommended for correction of multiple deficiencies, as determined by tissue analysis and soil testing, on any agricultural or horticultural crop where a deficiency of boron, manganese and/or zinc may exist. When deficiencies exist, use the following table or consult your local agricultural extension professional or your local professional consultant. This product is for soil application only.

Size of Product

Bulk Blend

Applications

Suggested Application Rates Per Acre

MILD deficiency 5 - 15 lbs

MODERATE deficiency 15 - 25 lbs

SEVERE deficiency 25 - 40 lbs

Advantages

- Contains 5% Calcium
- Blends and spreads with Dry Fertilizers
- Easy to adjust rate to fit different soils

What Customers are Saying

I like having one product to Balance the Micronutrients on my farm



Dry Micronutrients

Wolf Trax 18.5% Boron

Wolf Trax 18.5% Boron DDP is chemically and physically designed for earlier uptake. The particle size is ideal for plant uptake and nutrients are formulated to resist soil tie-up and remain plant-available. This product is coated onto every granule of a fertilizer blend which will result in an even, blanket-like distribution of boron across a field, delivering a safe dose of boron and placing the nutrient closer to the plant roots for earlier plant uptake. This product can be coated onto dry fertilizer, mixed in liquid fertilizer systems, or used in a foliar application.

Size of Product

Totes, Bags and in Bulk

Applications

This product may be used as a coating on all fertilizer blends (including Urea or Urea blends) Application rates and timing should be based on soil and/or tissue test, as well as consultations with a professional agricultural consultant. Apply up to 1 lb. of Wolf Trax Nutrient per 100 lbs. of fertilizer. For foliar Applications on Alfalfa, Corn, Soybeans, and Cereals: Use 4 oz. per acre and repeat three times per season.

Advantages

- Designed for better plant availability
- Designed for earlier uptake
- Boron maintains a balance between sugar and starch
- Boron is essential for proper cell wall formation
- Boron is important in pollination and seed reproduction

What Customers are Saying

We have determined with the right timing, a Wolf Trax Boron DDP application can help ensure us of a healthy alfalfa stand in the fall that is more resilient to winter injury and ensure us a better start next spring.



Wolf Trax 62% Zinc

Wolf Trax 62% Zinc features DUAL ACTION availability which provides plants with the nutrition they need throughout the growing season. One source of zinc is quickly available for plant uptake, while the other source releases more slowly. The role of Zinc in crop production is that it is an essential micronutrient for the growth, development, and reproduction of plants. This product is coated onto every granule of fertilizer blend which will result in a blanket-like distribution of zinc across a field, placing the nutrients closer to plant roots for an earlier plant uptake.

Size of Product

Totes, Bags and in Bulk

Applications

This product may be used as a coating on all fertilizer blends (including Urea or Urea blends) Application rates and timing should be based on soil and/or tissue test, as well as consultations with a professional agricultural consultant. Apply up to 1 lb. of Wolf Trax Nutrient per 100 lbs. of fertilizer. For Foliar Applications on Alfalfa, Corn, Soybeans, and Cereals: Use 6.5 oz. per acre and repeat application, if necessary. Apply in early spring.

Advantages

- Designed for better plant availability
- Designed for earlier uptake
- Very low heavy metal content
- Easy to use, easy to handle
- Environmental safety

What Customers are Saying

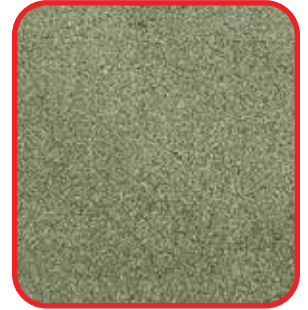
We have observed over the years that our crops have benefitted from an early and prolonged feeding of zinc. The early plant uptake of zinc enhances root development, water utilization, and yield potential.



Dry Sulfur

Tiger Organic 0-0-0-90 Sulfur

Tiger Organic 0-0-0-90 Sulfur is a high analysis granular degradable sulfur product that can be used both as a source of plant nutrient sulfur and/or as a soil amendment for correction of problems like alkali soils. Yearly applications of Tiger Organic 0-0-0-90 Sulfur will improve soil sulfur levels as well as loss associated with soluble nutrients. Tiger Organic 0-0-0-90 Sulfur is a unique, high analysis sulfur fertilizer that delivers agronomically and economically and provides excellent handling characteristics.



Size of Product

Totes and in Bulk

Applications

1. For 1 lb. of sulfur, use 1.11 lb. Tiger Organic 0-0-0-90.
2. Apply appropriate amount of Tiger Organic 0-0-0-90 according to soil amending needs recommended by a pH test and soil test to check for sodium and lime.
3. As a general guideline, apply 250 lbs. per acre or up to 5 lbs. per 1,000 sq. ft. of Tiger 90CR Sulfur and monitor soil pH levels to determine if additional sulfur applications are required.
4. One 50 lb. bag should cover up to 10,000 sq. ft.

Advantages

- Important to crop yield and quality
- Promotes efficient absorption and metabolism of NPK
- Improves soil conditions
- Essential to synthetic and catalytic plant reactions

What Customers are Saying

Tiger Organic 0-0-0-90 Sulfur, when used as a part of a balanced fertility program, can provide a season-long source of sulfur.



Dry Specialty Products

Humic Acid 100% Soluble Granule

Potassium Humate Granule is a soil conditioner that may enhance nutrient uptake. This Organic 100% Soluble Product is designed for a dry broadcast application or can be reconstructed in water to produce at a 12% liquid humic product at the ratio of 1 lb. granules to 1 gallon of water. This product is suitable for use in Organic Agricultural conforming to the annexes of the NOP regulation and inspected by ECOCERT SAF -32600.



Size of Product

Totes, Bags and in Bulk

Applications

We recommend that on Agronomic Crop that you apply 2 to 4 pounds per acre and for Turf that you apply 7 to 10 pounds per acre.

Advantages

- Soluble (100%)
- Blendable with NPK Fertilizer
- The product can be used in many applications such as dry broadcast spreading, blending/mixing with fertilizer or liquefied application
- Spreadable for Dry Application
- Reliable Quality Humic Acid
- Humic has time-release properties when applied dry, slowly dissolving as irrigated
- OMRI Certified



What Customers are Saying

Potassium Humate will contribute to improving soil quality, texture, water holding capacity (retention), and sustainability while breaking down clay lattices and reducing sodium build up in soils.



Dry Specialty Products

Muriate of Potash 0-0-60

Muriate of Potash ('MOP') 0-0-60 is the most economical of the Potassium fertilizers and the most widely used. It also has a higher water solubility than any other Potassium source. Potassium is one of the three primary crop nutrients required for plant growth. Potassium serves as the "Regulator" of many essential processes within the plant. MOP is an enriched source of mineral potassium for balanced leaf and root growth for vegetables, herbs, flowers, and ornamentals. MOP helps plants cope with the winter cold and the summer heat and is great for use in compost.



Size of Product

Totes and in Bulk

Applications

For specific application rates follow the recommendation of a qualified individual or institution, such as but not limited to, certified crop advisor, agronomist, university crop extension publication, or apply according to recommendations in your approved nutrient management plan. Turf Applications: We recommend 50 pounds of 0-0-60 Fertilizer to cover approximately 31,000 sq. ft. Crop Applications: We recommend 70 lbs. of 0-0-60 fertilizer per one acre on cropland.

Advantages

- 100% water soluble
- Well adapted to a wide range of application methods
- Suitable as a starter fertilizer on small grains, row crops, tree crops, and forages
- Excellent product for use in custom-mixed dry blends
- The monoammonium form reduces the risk of fertilizer injury to germinating seeds.

What Customers are Saying

We utilize the Muriate of Potash 0-0-60 in our farming operation as a potassium supplement to correct our soil deficiencies and as a part of a sound nutritional program.



33% Pell Lime

Pelletized limestone is gaining popularity due to its ease of handling and low use rate. It blends well with other dry fertilizers and makes for a one pass operation. Pell Lime gives growers readily available calcium the same season it's applied.

Size of Product

Totes, Bags and in Bulk

Applications

100 to 300 lbs per acre



Advantages

- Improves soil structure, tilth and aeration
- Encourages root growth and builds strong cell walls
- Facilitates nitrogen fixing bacteria
- Stimulates beneficial soil microbes



Dry Specialty Products

SO₄ Pelletized Gypsum

SO₄ pelletized gypsum is a sulfur type fertilizers that is essential component of plant growth, with key processes relying on sulfur like chlorophyll formation and protein production. It is often considered the fourth major nutrient behind N, P and K.



SO₄ pelletized gypsum supplies a strong initial release of sulfur followed by a steady supply throughout the growing season, delivering the right of amount of sulfur to perfectly match plant needs for yield-maximizing plant growth. SO₄ is mined and manufactured in northwest Iowa from one of the purest gypsum sources in the world. It is finely ground and pelletized to achieve a balance between solubility and pellet strength.

Size of Product

Bulk Blend

Applications

150 to 300 lbs per acre

Advantages

- Increases Corn Yield by 15.4 bu/acre
- Releases Sulfur to Match Plant Needs
- Spreads Easily
- Will Not Acidify Soil



What Customers are Saying

So₄ is an affordable way for me to keep readily available calcium in my soils





JOHN DEERE FINANCIAL

Why Finance Through John Deere Financial?

It's important to have your financing work as hard as your equipment does. And with John Deere in our name, you can be confident you'll get nothing less than world-class support. John Deere Financial offers value that no other lender can - a deep understanding of your industry, unmatched equipment expertise, and personalized financial solutions that can be quickly arranged through your dealer at the time of our purchase. For generations, we've been here to make equipment financing easy and affordable. And we'll be here for you - for the long run.







50476 817th Road
Spalding, NE 68665

We encourage you to visit a Sales Manager near you for more details.
We will be glad to discuss your needs and the options available to help you.

Jeff Pritchard | 308-750-1544 | jeff@pritchardag.com

Ryan Fisser | 402-741-9354 | ryan@pritchardag.com

Troy Piening | 402-432-3228 | troyswelding@aol.com

Garth Ostergard | 308-529-0322 | reliableagservice@yahoo.com

Dustin Piening | 402-802-6642 | dustin.piening@yahoo.com

pritchardag.com